



dysgucymraeg.cymru  
learnwelsh.cymru  
Morgannwg / Glamorgan



**Dysgwch Gymraeg  
gyda ni —  
Learn Welsh  
with us**



@learncymraegMG



/WelshForAdultsGlamorgan

**01443 483 600**  
**learnwelsh.cymru**



**Merthyr Tudful, Rhondda Cynon Taf,  
Pen-y-Bont ar Ogwr —  
Merthyr Tydfil, Rhondda Cynon Taf, Bridgend  
Cyrсияu / Courses 2017-2018**

01443 483600  
learnwelsh@southwales.ac.uk

# Contents Cynnwys

|  |           |
|--|-----------|
| <b>Welcome/Croeso</b>  | <b>3</b>  |
| <b>Courses for beginners/Cyrsiau ar gyfer dechreuwyr</b>                         | <b>4</b>  |
| <b>Standard Courses/Cyrsiau Arferol</b>  | <b>4</b>  |
| <b>Welsh for the family/Cymraeg i'r Teulu</b>                                    | <b>5</b>  |
| <b>Other Courses/Cyrsiau Eraill</b>  | <b>6</b>  |
| <b>Intensive Course/Y Cwrs Dwys</b>  | <b>7</b>  |
| <b>Express Course/Y Cwrs Brys</b>  | <b>8</b>  |
| <b>Already speak some Welsh?/Siarad tipyn bach o Gymraeg yn barod?</b>           | <b>9</b>  |
| <b>How to enrol/Sut i ymrestru</b>   | <b>10</b> |
| <b>Courses for beginners (Stage 1 and 2)/Cyrsiau i ddechreuwyr (Lefel 1 a 2)</b> | <b>12</b> |
| <b>Extra Learning/Dysgu Ychwanegol</b>   | <b>22</b> |
| <b>Practice makes Perfect/Cyfle i Ymarfer</b>                                    | <b>23</b> |
| <b>Important Information/Gwybodaeth Bwysig</b>                                   | <b>24</b> |
| <b>Online Resources/Adnoddau Ar-lein</b>   | <b>26</b> |



Courses Commence 25th September | Enrol in the class of your choice  
Cyrsiau'n dechrau 25ain Medi | Dewiswch gwrs sy'n addas i chi

# Welcome

People have lots of reasons for wanting to learn Welsh and it's easier than ever to find a language course to suit your needs.

Experienced tutors run a variety of courses in your area ranging from weekly evening classes to more intensive learning.

Whether you're a beginner or just want to brush up your language skills, there's a course for you. Joining a course is a great way to meet new people and all our courses are run in a friendly, informal way.

On the following pages, you'll find details of what's available. Please call us on **01443 483 600** or go to **learnwelsh.cymru** for more information.

Give it a go!

**Glamorgan Welsh for Adults Team**  
University of South Wales

To book a place call / i gadw lle ffoniwch **01443 483 600**  
or book online / neu ewch ar-lein **learnwelsh.cymru**

# Croeso

Os dych chi eisiau gwella eich Cymraeg, neu os dych chi'n chwilio am wersi Cymraeg ar gyfer rhywun arall, mae'n hawdd dod o hyd i gwrs addas.

Cewch fanylion am gyrsiau yn eich ardal chi yn y llyfryn hwn. Mae digon o ddewis, ac mae'r cyrsiau yn amrywio o rai wythnosol i rai dwys.

Os dych chi eisiau mwy o wybodaeth, mae croeso i chi ffonio: **01443 483 600** neu fynd i **learnwelsh.cymru**.

Beth amdanil!

**Tim Cymraeg i Oedolion Morgannwg**  
Prifysgol De Cymru

## Courses for beginners

Classes will run between September 2017 and June 2018, and will follow the school calendar.

### Standard Courses

#### Entry level 1

This course is ideal if you have no previous knowledge of Welsh. You will begin with an introduction to pronunciation, and move on to learn how to talk about everyday activities in the present and the past, concentrating on sentences used in conversational Welsh. Lessons are usually two hour sessions, once a week over a 30 week period.

#### Entry level 2

This is the follow on course from Entry level 1, and is an ideal starting place if you already have some knowledge of Welsh sentence patterns in the present and past. On this course you will learn how to extend your conversational skills in the present and past and will also learn how to discuss things in the future. Units also include: talking about what you must do, giving your opinion, discussing health, saying what you can and can't do and where you've been. Lessons are usually two hour sessions, once a week over a 30 week period.

#### Entry level 1 & 2

This is an ideal course for those who can commit to a faster pace of learning. The course covers all the work covered in Entry level 1 and Entry level 2 in one year. Lessons are usually two hour sessions that meet twice a week over a 30 week period.

The full list of courses can be found from page 12 onwards.

## Cyrsiau ar gyfer dechreuwyr

Bydd y dosbarthiadau yn cael eu cynnal rhwng mis Medi 2017 a mis Mehefin 2018, a byddant yn dilyn y calendr ysgol.

### Cyrsiau Arferol

#### Mynediad 1

Mae'r cwrs yma'n berffaith os dych chi'n ddechreuwr pur. Byddwch yn dysgu ynganu, cyn symud ymlaen i siarad am bethau pob dydd yn y presennol a'r gorffennol, gyda phwyslais ar sgwrsio yn Gymraeg. Mae'r gwersi'n ddwy awr o hyd fel arfer, ac yn cwrdd unwaith yr wythnos dros gyfnod o 30 wythnos.

#### Mynediad 2

Mae'r cwrs yma'n dilyn Mynediad 1, ac yn berffaith ar gyfer dysgwyr sydd eisoes yn gallu siarad ychydig o Gymraeg yn y presennol a'r gorffennol. Byddwch yn dysgu sut i ymestyn eich sgiliau sgwrsio yn y presennol a'r gorffennol, a symud ymlaen i drafod pethau yn y dyfodol. Mae'r unedau'n cynnwys: siarad am beth mae'n rhaid i chi wneud, rhoi eich barn, trafod iechyd, dweud beth dych chi'n gallu gwneud a beth dych chi ddim yn gallu gwneud a sôn am ble dych chi wedi bod. Mae'r gwersi'n ddwy awr o hyd fel arfer, ac yn cwrdd unwaith yr wythnos dros gyfnod o 30 wythnos.

#### Mynediad 1 a 2

Mae'r cwrs yma'n berffaith i'r sawl sydd am symud drwy'r lefelau yn gyflymach. Mae'n gwrs blwyddyn, sy'n cynnwys yr holl waith a gyflwynir ym Mynediad 1 a Mynediad 2. Mae'r gwersi'n ddwy awr o hyd fel arfer, ac yn cwrdd ddwywaith yr wythnos dros gyfnod o 30 wythnos.

Rhestrir y cyrsiau i gyd o dudalen 12 ymlaen.

Courses Commence 25th September | Enrol in the class of your choice  
Cyrsiau'n dechrau 25ain Medi | Dewiswch gwrs sy'n addas i chi



### Welsh for the Family



#### Welsh for the Family: Entry level 1

This unique course is designed for adults who wish to use the language with young children. The course includes vocabulary, sentence patterns, songs, activities and dialogues. You will begin with an introduction to pronunciation, and move on to learn how to talk about everyday activities in the present and the past, concentrating on sentences used in conversational Welsh. Lessons are usually two hour sessions, once a week over a 30 week period.

#### Welsh for the Family: Entry level 2

This is the follow on course from Welsh for the Family: Entry level 1, and is an ideal starting place if you already have some knowledge of Welsh sentence patterns in the present and past. On this course you will learn how to extend your conversational skills in the present and past. Units also include: talking about what you must and must not do, giving your opinion and discussing money. Lessons are usually two hour sessions, once a week over a 30 week period.

#### Welsh for the Family: Entry level 1 & 2

This is an ideal course for those who can commit to a faster pace of learning. The course covers all the work covered in Welsh for the Family: Entry level 1 and Welsh for the Family: Entry level 2 in one year. Lessons are usually two hour sessions that meet twice a week over a 30 week period.

To book a place call / i gadw lle ffoniwch **01443 483 600**  
or book online / neu ewch ar-lein **learnwelsh.cymru**

### Cymraeg i'r Teulu



#### Cymraeg i'r Teulu: Mynediad 1

Dyma gwrs unigryw sydd wedi cael ei gynllunio ar gyfer dysgwyr sydd am ddefnyddio'r iaith gyda phlant ifanc. Mae'r cyrsiau yn cynnwys geirfa, patrymau brawddegau, caneuon, gweithgareddau a deialogau. Byddwch yn dysgu ynganu, cyn symud ymlaen i siarad am bethau pob dydd yn y presennol a'r gorffennol, gyda phwyslais ar sgwrsio yn Gymraeg. Mae'r gwersi'n ddwy awr o hyd fel arfer, ac yn cwrdd unwaith yr wythnos dros gyfnod o 30 wythnos.

#### Cymraeg i'r Teulu: Mynediad 2

Mae'r cwrs yma'n dilyn Cymraeg i'r Teulu: Mynediad 1, ac yn berffaith ar gyfer dysgwyr sydd eisoes yn gallu siarad ychydig o Gymraeg yn y presennol a'r gorffennol. Byddwch yn dysgu sut i ymestyn eich sgiliau sgwrsio yn y presennol a'r gorffennol, ac yn symud ymlaen i drafod pethau yn y dyfodol. Mae'r unedau'n cynnwys: siarad am beth mae'n rhaid i chi wneud a beth mae'n rhaid i chi beidio gwneud, rhoi eich barn a thrafod arian. Mae'r gwersi'n ddwy awr o hyd fel arfer, ac yn cwrdd unwaith yr wythnos dros gyfnod o 30 wythnos.

#### Cymraeg i'r Teulu: Mynediad 1 a 2

Mae'r cwrs yma'n berffaith i'r sawl sydd am symud drwy'r lefelau yn gyflymach. Mae'n gwrs blwyddyn, sy'n cynnwys yr holl waith a gyflwynir yn Cymraeg i'r Teulu Mynediad 1 a Cymraeg i'r Teulu Mynediad 2. Mae'r gwersi'n ddwy awr o hyd fel arfer, ac yn cwrdd ddwywaith yr wythnos dros gyfnod o 30 wythnos.

## Other Courses

### Intensive Course

9 hours a week over 3 mornings. Following this course is by far the fastest and most effective way of learning Welsh. Worth considering if your aim is to become fluent as quickly as possible. See page 7 for further details.

### Express Course

These two week courses will be held during Summer 2017, and will enable learners to complete one whole level over a short period of time at an accelerated pace of learning. Learners who successfully complete this course will be ready to start the next level in September 2017. See page 8 for further details.

### Workplace Course

Workplace courses can be tailored to meet the needs of any employer, content-wise and time-wise, or can simply follow the standard curriculum. A new 'Work Welsh' scheme has also been introduced, which includes intensive courses, online courses and specialised residential courses.

For more information, contact the Welsh in the Workplace Development Officer, **Annalie Price**:  
annalie.price@decymru.ac.uk | 01443 482 144

### Sabbatical Courses for Primary School Teachers and LSAs

These are courses for teachers and LSAs in English medium primary schools who want to improve their skills and confidence in using Welsh at work. The course fees and supply cover are paid for by the Welsh Government, and course members have time off work on full pay and receive travel expenses. Two courses are available: Entry Level Course for LSAs (5 week full time); Foundation Course for Primary School Teachers (11 week full-time).

For more information, contact **Sylfia Fisher**:  
sylfia.fisher@decymru.ac.uk | 01443 483 600

## Cyrsiau Eraill

### Cwrs Dwys

9 awr yr wythnos dros 3 bore. Dilyn y cwrs yma yw'r modd cyflymaf a mwyaf effeithiol o ddysgu Cymraeg. Gwerth ei ystyried os dych chi eisiau dod yn rhugl cyn gynted â phosib. Gweler tudalen 7 am fwy o fanylion.

### Cwrs Brys

Cynhelir y cyrsiau pythefnos yma dros haf 2017. Bydd y cyrsiau yn galluogi dysgwyr i gwblhau un lefel mewn cyfnod byr o amser. Bydd y dysgwyr sy'n cwblhau'r cwrs yn llwyddiannus yn barod i ddechrau ar y lefel nesaf ym mis Medi 2017. Gweler tudalen 8 am fwy o fanylion.

### Cwrs Gweithle

Gall cyrsiau'r gweithle gael eu teilwra i gyfateb ag anghenion unrhyw gyflogwr, o ran cynnwys ac o ran amser, neu mae modd dilyn yr un cwricwlwm â chyrsiau arferol. Mae cynllun newydd 'Cymraeg Gwaith' hefyd wedi cael ei gyflwyno, sy'n cynnwys cyrsiau dwys, cyrsiau ar lein a chyrsiau preswyl arbenigol.

Am fwy o wybodaeth, cysylltwch â'r Swyddog Datblygu Cymraeg yn y Gweithle, **Annalie Price**:  
annalie.price@decymru.ac.uk | 01443 482 144

### Cyrsiau Sabothol i Athrawon Ysgolion Cynradd a Chynorthwywyr Dosbarth

Dyma gyrsiau ar gyfer athrawon a chynorthwywyr mewn ysgolion cyfrwng Saesneg sydd am wella eu Cymraeg a dod yn fwy hyderus wrth ddefnyddio'r iaith yn eu gwaith. Mae holl gostau'r cwrs a chostau cyflenwi yn cael eu talu gan Lywodraeth Cymru. Bydd aelodau'r cwrs yn cael amser o'r gwaith gyda chyflog llawn a byddan nhw'n derbyn costau teithio. Mae dau gwrs ar gael: Cwrs Mynediad i Gynorthwywyr Dosbarth (5 wythnos llawn amser); Cwrs Sylfaen i Athrawon Cynradd (11 wythnos llawn amser).

Am fwy o fanylion, cysylltwch â **Sylfia Fisher**:  
sylfia.fisher@decymru.ac.uk | 01443 483 600

**HALF  
PRICE**  
for Year 1

## INTENSIVE COURSE Y CWRS DWYS

### Would you like to learn Welsh in the shortest time possible?

9 hours a week over 3 mornings. Following this course is by far the fastest and most effective way of learning Welsh. Worth considering if your aim is to become fluent as quickly as possible. You don't have to start from the beginning - you can join the course in the second, third or fourth year.

### Ydych chi eisiau dysgu Cymraeg yn yr amser byrraf posib?

9 awr yr wythnos dros 3 bore. Dilyn y cwrs yma yw'r modd cyflymaf a mwyaf effeithiol o ddysgu Cymraeg. Gwerth ei ystyried os dych chi eisiau dod yn rhugl cyn gynted â phosib. Does dim rhaid dechrau yn y flwyddyn gyntaf - cewch chi ymuno yn yr ail, y drydedd neu'r bedwaredd flwyddyn.

### Entry + Foundation (Year 1)

Church Village – Gartholwg Lifelong Learning Centre CF38 1RQ  
Monday, Wednesday and Friday | 9.30am-12.30pm  
Price: was £140 now **£70** | Course Code: D01T01H

Three  
times a  
week

### Canolradd (Year 2)

Church Village – Gartholwg Lifelong Learning Centre CF38 1RQ  
Monday, Wednesday and Friday | 9.30am-12.30pm  
Price: £140 (concessionary £73) | Course Code: D03T01H

Three  
times a  
week

### Uwch 1 + 2 (Year 3)

Pentre'r Eglwys – Canolfan Dysgu Gydol Oes Gartholwg CF38 1RQ  
Mawrth a Iau | 9.30am-12.30pm | Pris: £105 (gostyngiad £50) | Cod y cwrs: U12T01H

Twice  
a week

### Uwch 3 + 4 (Year 4)

Pentre'r Eglwys – Canolfan Dysgu Gydol Oes Gartholwg CF38 1RQ  
Mawrth a Iau | 9.30am-12.30pm | Pris: £105 (gostyngiad £50) | Cod y cwrs: U04T01H

Twice  
a week

Only | Dim Ond

**£75\***\*Concessionary fee available  
Mae gostyngiad ar gael

# EXPRESS COURSE Y CWRS BRYS

This two week course will enable learners to complete one whole level over a short period of time at an accelerated pace of learning.

Learners who successfully complete this course will be ready to start the next level in September 2017.

## Entry 1 (Complete beginner)\*\*

03/07/17 | Monday-Friday | 9.30am-4.30pm  
USW, Treforest, CF37 1DL

## Entry 2 (Beginner – basic knowledge)\*\*

17/07/17 | Monday-Friday | 9.30am-4.30pm  
USW, Treforest, CF37 1DL

## Foundation 1 | Sylfaen 1\*\*

07/08/17 | Monday-Friday | 9.30am-4.30pm  
USW, Treforest, CF37 1DL

## Foundation 2 | Sylfaen 2\*\*

21/08/17 | Monday-Friday | 9.30am-4.30pm  
USW, Treforest, CF37 1DL

Dyma gwrs pythefnos ym mis Gorffennaf 2017 sy'n galluogi dysgwyr i gwblhau un lefel gyfan mewn cyfnod byr o amser.

Bydd y dysgwyr sy'n cwblhau'r cwrs yn llwyddiannus yn barod i ddechrau ar y lefel nesaf ym mis Medi 2017.

## Intermediate 2 | Canolradd 2\*\*

03/07/17 | Monday-Friday | 9.30am-4.30pm  
USW, Treforest, CF37 1DL

## Intermediate 2 | Canolradd 2\*\*

17/07/17 | Monday-Friday | 9.30am-4.30pm  
USW, Treforest, CF37 1DL

## Advanced Level | Cwrs Gloywi 2\*\*

07/08/17 | Monday-Friday | 9.30am-4.30pm  
USW, Treforest, CF37 1DL

**Cwrs / Course:** £50 (dyw pris y llyfr heb gael ei gynnwys / the course book is not included in the price)

**Closing date:** Friday 16th June 2017 | **Dyddiad cau:** dydd Gwener 16eg Mehefin 2017

\*\*Subject to numbers

## Already speak some Welsh?

We offer courses up to and including Proficiency level. You can find them online at [learnwelsh.cymru](http://learnwelsh.cymru).

If you have any problems finding the right course, give us a call and our friendly staff will be happy to help:  
**01443 483 600**

Here's a handy guide to the levels:

### Entry

For complete beginners or individuals who have not practised their Welsh for some time. Emphasis is very much on conversational Welsh – personal details and past events are among the topics covered.

### Foundation

For those who have completed entry level or whose Welsh is of an equivalent standard. Topics covered include family, work and interests.

### Intermediate

You should feel comfortable holding a conversation on everyday topics by the end of this level. The emphasis is still on speaking, but a little more writing, reading and listening is introduced.

### Advanced

You will still concentrate on oral skills, but this level also helps you write competently. You will use authentic Welsh materials from S4C, Radio Cymru and the Welsh press.

### Proficiency

This level is aimed at fluent learners and first language Welsh speakers who want to improve their language skills, either orally or with written Welsh.

## Siarad tipyn bach o Gymraeg yn barod?

Dyn ni'n cynnig cyrsiau hyd at lefel Hyfedredd, ac mae'r wybodaeth i gyd ar y we ar [learnwelsh.cymru](http://learnwelsh.cymru).

Os dych chi'n cael unrhyw anhawster yn dod o hyd i gwrs, ffoniwch ni a bydd ein staff cyfeillgar yn hapus i'ch helpu:  
**01443 483 600**

Dyma'r lefelau:

### Mynediad

Ar gyfer dechreuwyr pur neu ar gyfer unigolion sydd heb ymarfer eu Gymraeg ers amser. Mae'r pwyslais ar sgwrsio, ac mae'r nodau dysgu yn cynnwys trafod manylion personol a digwyddiadau yn y gorffennol.

### Sylfaen

I'r rhai sydd wedi cwblhau lefel Mynediad neu sydd â Chymraeg o'r un safon. Ymhlith y pynciau mae trafod y teulu, gwaith a diddordebau.

### Canolradd

Dylech chi deimlo'n gyfforddus yn cynnal sgwrs ar bynciau pob dydd erbyn diwedd y lefel. Mae'r pwyslais yn dal i fod ar siarad, ond mae ychydig o waith ysgrifennu, darllen a gwrando yn ogystal.

### Uwch

Mae'r cwrs yn dal i ganolbwyntio ar sgiliau llafar, ond dych chi hefyd yn cael eich cyflwyno i radio, teledu a phapurau newydd Cymraeg. Mae'r cwrs hefyd yn eich helpu i ysgrifennu'n hyderus.

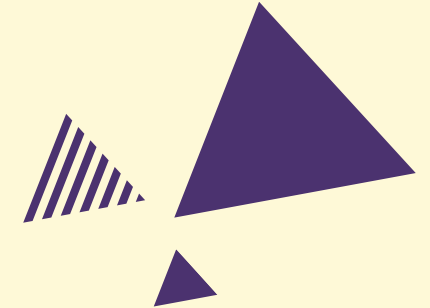
### Hyfedredd

Mae'r lefel hon ar gyfer siaradwyr iaith gyntaf a dysgwyr rhugl sydd am loywy eu sgiliau, naill ai ar lafar trwy gyfoethogi geirfa a thrafod pynciau arbenigol, neu ar bapur wrth ddsygu ysgrifennu'n gywir ac yn raenus.

To book a place call / i gadw lle ffoniwch **01443 483 600**  
or book online / neu ewch ar-lein [learnwelsh.cymru](http://learnwelsh.cymru)



## Entry level courses Stage 1 and 2



All courses start during the week  
of 25th September.



## How do I Enrol?



You can enrol and pay in advance  
online at [learnwelsh.cymru](http://learnwelsh.cymru) or go  
along to your first lesson for a  
taster before enrolling.

For more information please call us:  
**01443 483 600**

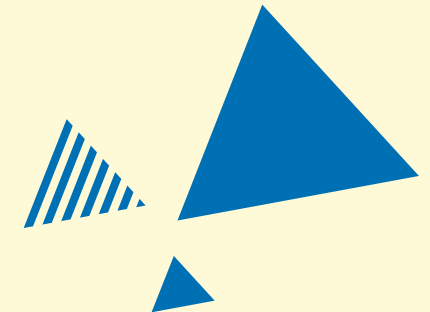
## Sut mae Ymrestru?



Gallwch ymrestru a thalu o flaen llaw  
arlein ar [learnwelsh.cymru](http://learnwelsh.cymru) neu  
gallwch fynd i'ch gwrs gyntaf i  
gael blas ar y cwrs cyn ymrestru.

Am fwy o wybodaeth ffoniwch ni:  
**01443 483 600**

## Cyrsiau Mynediad Lefel 1 a 2



Mae pob cwrs yn dechrau yn ystod  
wythnos 25ain Medi.



# Intensive Course – Entry and Foundation

Complete two levels in one year



| Day(s)  | Time           | Price | Course Code |
|---|----------------|-------|-------------|
| <b>Church Village – Gartholwg Lifelong Learning Centre CF38 1RQ</b> |                |       |             |
| Monday, Tuesday and Friday  | 9.30am-12.30pm | £70   | D01T01H     |

# Entry 1 and 2 – Complete Beginners


Complete one level in one year



## Rhondda

| Day(s)                                       | Day(s)    | Time          | Price    | Course Code |
|--|-----------|---------------|----------|-------------|
| <b>Llwynypia – Coleg y Cymoedd, CF40 2TQ</b> |           |               |          |             |
| Friday                                       |           | 9.30am-1.30pm | £95/*£45 | M12R01H     |
| <b>Llwynypia – Coleg y Cymoedd, CF40 2TQ</b> |           |               |          |             |
| Monday                                       | Wednesday | 7pm-9pm       | £95/*£45 | M12R02H     |

## Cynon


|  |          |               |          |         |
|--|----------|---------------|----------|---------|
| <b>Aberdare – Community School, CF44 7RP</b>   |          |               |          |         |
| Tuesday  | Thursday | 6.30pm-8.30pm | £95/*£45 | M12C01H |
| <b>Robertstown – Coleg y Cymoedd Aberdare, Former Goods Yard, CF44 ONE</b>  |          |               |          |         |
| Tuesday  |          | 9.30am-3.30pm | £95/*£45 | M12C02H |

 Welsh for the Family courses. See page 5 for details.


\*Concessionary rate see page 24/25 | Ffioedd Gostyngol gweler tudalen 24/25

Courses Commence 25th September | Enrol in the class of your choice  
Cysiau'n dechrau 25ain Medi | Dewiswch gwrs sy'n addas i chi

## Taf


| Day(s)  | Day(s)    | Time           | Price    | Course Code |
|---|-----------|----------------|----------|-------------|
| <b>Church Village – Gartholwg Lifelong Learning Centre, Heol St Iltyd, CF38 1RQ</b>   |           |                |          |             |
| Monday  | Wednesday | 7pm-9pm        | £95/*£45 | M12T01H     |
| <b>Nantgarw – Coleg y Cymoedd Nantgarw, Heol y Coleg, Parc Nantgarw, CF15 7QX</b>   |           |                |          |             |
| Tuesday   | Thursday  | 7pm-9pm        | £95/*£45 | M12T02H     |
| <b>Pontypridd – University of South Wales, Treforest, CF37 1DL</b>  |           |                |          |             |
| Saturday  |           | 9.30am-12.30am | £85/*£40 | M12T03H     |
| <b>Church Village – Gartholwg Lifelong Learning Centre, Heol St Iltyd, CF38 1RQ</b>  |           |                |          |             |
| Wednesday   |           | 9.30am-3.30pm  | £95/*£45 | M12T04H     |

## Bridgend

|  |          |                |          |         |
|--|----------|----------------|----------|---------|
| <b>Bridgend – Bridgend College Main Campus, Cowbridge Rd, CF31 1DF</b>   |          |                |          |         |
| Tuesday  | Thursday | 6.30pm-8.30pm  | £95/*£45 | M12P01H |
| <b>Sarn – Sarn Centre, Merfield Close, CF32 9SW</b>  |          |                |          |         |
| Saturday   |          | 9.15am-12.15pm | £85/*£40 | M12P02H |
| <b>Bridgend – Brackla Primary School, Brackla Way, CF31 3EZ</b>  |          |                |          |         |
| Tuesday  | Thursday | 9.30am-11.30am | £95/*£45 | M12P03H |

## Merthyr Tydfil

|  |          |                |          |         |
|--|----------|----------------|----------|---------|
| <b>Merthyr Tydfil – Canolfan Soar, Pontmorlais, CF47 8UB</b> |          |                |          |         |
| Tuesday  | Thursday | 7pm-9pm        | £95/*£45 | M12M01H |
| <b>Merthyr Tydfil – Canolfan Soar, Pontmorlais, CF47 8UB</b> |          |                |          |         |
| Saturday   |          | 9.30am-12.30pm | £75/*£45 | M12M02H |
| <b>Merthyr Tydfil – Canolfan Soar, Pontmorlais, CF47 8UB</b> |          |                |          |         |
| Thursday   |          | 9.30am-3.30pm  | £95/*£45 | M12M03H |

 Welsh for the Family courses. See page 5 for details.

\*Concessionary rate see page 24/25 | Ffioedd Gostyngol gweler tudalen 24/25


To book a place call / i gadw lle ffoniwch **01443 483 600**  
or book online / neu ewch ar-lein **learnwelsh.cymru**

# Entry 1 – Complete Beginners

Once a week. Complete Units 1-15 (out of 30) in one year.




## Rhondda

| Day(s)   | Day(s) | Time           | Price    | Course Code |
|--|--------|----------------|----------|-------------|
| <b>Porth</b> – Porth Library, Pontypridd Road, CF39 3PG  |        |                |          |             |
| Thursday   |        | 9.30am-11.30am | £75/*£35 | M01R01H     |
| <b>Tonypandy</b> – Llwynypia Coleg y Cymoedd, CF40 2TQ   |        |                |          |             |
| Monday   |        | 7pm-9pm        | £75/*£35 | M01R02H     |
| <b>Treorchy</b> – Treorchy Library, Station Road, CF42 6NN  |        |                |          |             |
| Wednesday  |        | 9.30am-11.30am | £75/*£35 | M01R03H     |

## Cynon

|  |  |                |          |         |
|--|--|----------------|----------|---------|
| <b>Aberdare</b> – Coleg y Cymoedd, Former Goods Yard, Robertstown, CF44 0NE  |  |                |          |         |
| Friday   |  | 9.30am-11.30am | £75/*£35 | M01C01H |
| <b>Trecynon</b> – St Fagans Church Hall, Windsor Street, CF44 8LL  |  |                |          |         |
| Tuesday  |  | 10am-12pm      | £75/*£35 | M01C02H |
| <b>Aberdare</b> – Aberdare Community School, CF44 7RP  |  |                |          |         |
| Thursday   |  | 7pm-9pm        | £75/*£35 | M01C03H |
| <b>Aberdare</b> – Neighbourhood Watch, Gadlys Road, CF44 88N   |  |                |          |         |
| Tuesday  |  | 7pm-9pm        | £75/*£35 | M01C04H |
| <b>Penderyn</b> – Community Centre, Pontpren, CF44 9UX            |  |                |          |         |
| Monday   |  | 9.30am-11.30am | £75/*£35 | M01C05H |
| <b>Mountain Ash</b> – YMCA, Dyffryn Road, CF45 4DA                |  |                |          |         |
| Wednesday  |  | 9.30am-11.30am | £75/*£35 | M01C06H |
| <b>Cwmbach</b> – Cwmbach Junior School, Llangorse Road, CF44 OHS  |  |                |          |         |
| Monday   |  | 6.30pm-8.30pm  | £75/*£35 | M01C07H |

 Welsh for the Family courses. See page 5 for details.

\*Concessionary rate see page 24/25 | Ffioedd Gostyngol gweler tudalen 24/25

Courses Commence 25th September | Enrol in the class of your choice  
Cysiau'n dechrau 25ain Medi | Dewiswch gwrs sy'n addas i chi

## Taf

| Day(s)  | Day(s) | Time           | Price    | Course Code |
|---|--------|----------------|----------|-------------|
| <b>Church Village</b> – Gartholwg Lifelong Learning Centre, Heol St Iltyd, CF38 1RQ   |        |                |          |             |
| Monday  |        | 9.30am-11.30am | £75/*£35 | M01T01H     |
| <b>Pontypridd</b> – University of South Wales, Treforest, CF37 1DL  |        |                |          |             |
| Monday  |        | 5.30pm-7.30pm  | £75/*£35 | M01T02H     |
| <b>Pontyclun</b> – Ysgol Dolau, Llanharan, CF72 9RP   |        |                |          |             |
| Thursday  |        | 6pm-8pm        | £75/*£35 | M01T03H     |
| <b>Nantgarw</b> – Coleg y Cymoedd Nantgarw, Heol y Coleg, Parc Nantgarw, CF15 7QX   |        |                |          |             |
| Tuesday   |        | 6.30pm-8.30pm  | £75/*£35 | M01T04H     |
| <b>Pontypridd</b> – Pontypridd Library, Library Road, CF37 4PE  |        |                |          |             |
| Monday  |        | 7pm-9pm        | £75/*£35 | M01T05H     |
| <b>Pontyclun</b> – Cafe 50, Station Road, CF72 9EE  |        |                |          |             |
| Wednesday   |        | 7pm-9pm        | £75/*£35 | M01T06H     |
| <b>Tonyrefail</b> – TBC   |        |                |          |             |
| TBC   |        | TBC            | £75/*£35 | M01T07H     |
| <b>Pontyclun</b> – Llanhari Welsh School, Llanharry, CF72 9XE  |        |                |          |             |
| Tuesday   |        | 6.30pm-8.30pm  | £75/*£35 | M01T08H     |

 Welsh for the Family courses. See page 5 for details.

\*Concessionary rate see page 24/25 | Ffioedd Gostyngol gweler tudalen 24/25

To book a place call / i gadw lle ffoniwch **01443 483 600**  
or book online / neu ewch ar-lein **learnwelsh.cymru**







# Entry 1 – Complete Beginners

Once a week. Complete Units 1-15 (out of 30) in one year.



## Bridgend



| Day(s)   | Day(s) | Time           | Price    | Course Code |
|--|--------|----------------|----------|-------------|
| <b>Bridgend</b> – Queen's Rd Campus, Bridgend College, CF31 3DF  |        |                |          |             |
| Friday   |        | 9.30am-11.30am | £75/*£35 | M01P01H     |
| <b>Porthcawl</b> – Y Centre, John St, CF36 3AP   |        |                |          |             |
| Thursday   |        | 10am-12pm      | £75/*£35 | M01P02H     |
| <b>Bridgend</b> – Carnegie House, Bridgend Old Library, CF31 1EF   |        |                |          |             |
| Wednesday  |        | 10am-12pm      | £75/*£35 | M01P03H     |
| <b>Bridgend</b> – TBC  |        |                |          |             |
| Monday   |        | 1pm-3pm        | £75/*£35 | M01P04H     |
| <b>Maesteg</b> – Maesteg Campus, Bridgend College, CF34 9UN  |        |                |          |             |
| Monday   |        | 6pm-8pm        | £75/*£35 | M01P05H     |
| <b>Pencoed</b> – Pencoed Campus Bridgend College, CF35 5LG   |        |                |          |             |
| Tuesday  |        | 6pm-8pm        | £75/*£35 | M01P06H     |
| <b>Bridgend</b> – Bridgend College, Main Campus, Cowbridge Rd, CF31 1DF  |        |                |          |             |
| Thursday   |        | 6.30pm-8.30pm  | £75/*£35 | M01P07H     |
| <b>Porthcawl</b> – Y Centre, John St, CF36 3AP   |        |                |          |             |
| Monday   |        | 7pm-9pm        | £75/*£35 | M01P08H     |
| <b>Ysgol Y Ferch o Sger, North Cornelly, CF33 4LW</b>       |        |                |          |             |
| Tuesday  |        | 9.15am-11.15am | £75/*£35 | M01P09H     |
| <b>Maesteg</b> – Bridgend College Maesteg Campus, CF34 9UN  |        |                |          |             |
| Wednesday  |        | 9.30am-11.30am | £75/*£35 | M01P10H     |
| <b>Bridgend</b> – Bridgend College, Cowbridge Rd, CF31 1DF  |        |                |          |             |
| Wednesday  |        | 7pm-9pm        | £75/*£35 | M01P11H     |


 Welsh for the Family courses. See page 5 for details.

\*Concessionary rate see page 24/25 | Ffioedd Gostyngol gweler tudalen 24/25

Courses Commence 25th September | Enrol in the class of your choice  
Cysiau'n dechrau 25ain Medi | Dewiswch gwrs sy'n addas i chi

## Merthyr Tydfil

| Day(s)   | Day(s) | Time           | Price    | Course Code |
|--|--------|----------------|----------|-------------|
| <b>Merthyr Tydfil</b> – Civic Centre, Castle Street, CF47 8AN  |        |                |          |             |
| Wednesday  |        | 8.30am-10.30am | £75/*£45 | M01M01H     |
| <b>Pentrebach</b> – Cwmgolau Integrated Children's Centre, Duffryn Road, CF48 4BJ  |        |                |          |             |
| Wednesday  |        | 10am-12pm      | £75/*£35 | M01M02H     |
| <b>Bedlinog</b> – Miners Association, 30 Pleasant View, CF46 6TF   |        |                |          |             |
| Thursday   |        | 7.30pm-9.30pm  | £75/*£45 | M01M03H     |
| <b>Merthyr Tydfil</b> – Canolfan Soar, Castle Street, CF47 8UB  |        |                |          |             |
| Friday   |        | 10am-12pm      | £75/*£45 | M01M04H     |
| <b>Merthyr Tydfil</b> – Heolgerrig, TBC                         |        |                |          |             |
| Thursday   |        | 7pm-9pm        | £75/*£35 | M01M05H     |

 Welsh for the Family courses. See page 5 for details.

\*Concessionary rate see page 24/25 | Ffioedd Gostyngol gweler tudalen 24/25



To book a place call / i gadw lle ffoniwch **01443 483 600**  
or book online / neu ewch ar-lein **learnwelsh.cymru**

# Entry 2 | Mynediad 2

**Once a week.** Complete Units 16-30 in one year. Suitable after about 60 hours or more on a Welsh for Adults course.




## Rhondda

| Day(s)  | Day(s) | Time           | Price    | Course Code |
|---|--------|----------------|----------|-------------|
| <b>Treorchy</b> – Treorchy Library, Station Road, CF42 6NN        |        |                |          |             |
| Monday  |        | 12.30pm-2.30pm | £75/*£35 | M02R01H     |
| <b>Williamstown</b> – Tŷ Elai, Dinas Isaf East, CF40 1NY          |        |                |          |             |
| Thursday  |        | 4pm-6pm        | £75/*£35 | M02R02H     |
| <b>Tonypanyd</b> – Llwynypia Coleg y Cymoedd, Llwynypia, CF40 2TQ |        |                |          |             |
| Monday  |        | 7pm-9pm        | £75/*£35 | M02R03H     |

## Cynon

|  |  |                |          |         |
|--|--|----------------|----------|---------|
| <b>Penywaun</b> – Penywaun Family Centre, 112-114 Dan-yr-Heol, CF44 9ED  |  |                |          |         |
| Thursday   |  | 9.30am-11.30am | £75/*£35 | M02C01H |
| <b>Trecynon</b> – St Fagans Church Hall, Windsor Street, CF44 8LL  |  |                |          |         |
| Wednesday  |  | 10am-12pm      | £75/*£35 | M02C02H |
| <b>Abercynon</b> – Tŷ Trevithick, CF45 4UQ   |  |                |          |         |
| Tuesday  |  | 4pm-6pm        | £75/*£35 | M02C03H |
| <b>Mountain Ash</b> – YMCA, Dyffryn Road, CF45 4DA   |  |                |          |         |
| Monday   |  | 6pm-8pm        | £75/*£35 | M02C04H |
| <b>Aberdare</b> – Aberdare Community School, CF44 7RP  |  |                |          |         |
| Thursday   |  | 7pm-9pm        | £75/*£35 | M02C05H |
| <b>Penderyn</b> – Community Centre, Pontpren, CF44 9UX      |  |                |          |         |
| Friday   |  | 9.30am-11.30am | £75/*£35 | M02C06H |
| <b>Aberdare</b> – Aberdare Library, Green Street, CF44 7AG  |  |                |          |         |
| Tuesday  |  | 9.30am-11.30am | £75/*£35 | M02C07H |

 Welsh for the Family courses. See page 5 for details.


\*Concessionary rate see page 24/25 | Ffioedd Gostyngol gweler tudalen 24/25

Courses Commence 25th September | Enrol in the class of your choice  
Cyrisiau'n dechrau 25ain Medi | Dewiswch gwrs sy'n addas i chi

## Taf

| Day(s)  | Day(s) | Time           | Price    | Course Code |
|---|--------|----------------|----------|-------------|
| <b>Pontypridd</b> – University of South Wales, Treforest, CF37 1DL  |        |                |          |             |
| Monday  |        | 5.45pm-7.45pm  | £75/*£35 | M02T01H     |
| <b>Church Village</b> – Gartholwg Lifelong Learning Centre, Heol St Iltyd, CF38 1RQ   |        |                |          |             |
| Tuesday   |        | 7pm-9pm        | £75/*£35 | M02T02H     |
| <b>Pontypridd</b> – Pontypridd Library, Library Road, CF37 4PE  |        |                |          |             |
| Wednesday   |        | 7pm-9pm        | £75/*£35 | M02T03H     |
| <b>Church Village</b> – Gartholwg Lifelong Learning Centre, Heol St Iltyd, CF38 1RQ  |        |                |          |             |
| Tuesday   |        | 9.30am-11.30am | £75/*£35 | M02T04H     |
| <b>Llantrisant</b> – Llantrisant Welsh School, Miskin, CF72 8SS                      |        |                |          |             |
| Monday  |        | 7pm-9pm        | £75/*£35 | M02T05H     |



 Welsh for the Family courses. See page 5 for details.

\*Concessionary rate see page 24/25 | Ffioedd Gostyngol gweler tudalen 24/25

To book a place call / i gadw lle ffoniwch **01443 483 600**  
or book online / neu ewch ar-lein **learnwelsh.cymru**


# Entry 2 | Mynediad 2


Once a week. Complete Units 16-30 in one year. Suitable after about 60 hours or more on a Welsh for Adults course.



## Bridgend

| Day(s)   | Day(s) | Time           | Price    | Course Code |
|--|--------|----------------|----------|-------------|
| <b>Bridgend</b> – Queen's Rd Campus, Bridgend College, CF31 3DF  |        |                |          |             |
| Friday   |        | 9.15am-11.15am | £75/*£35 | M02P01H     |
| <b>Porthcawl</b> – Trinity Church, CF36 3DT  |        |                |          |             |
| Thursday   |        | 10am-12pm      | £75/*£35 | M02P02H     |
| <b>Bridgend</b> – TBC  |        |                |          |             |
| Monday   |        | 10am-12pm      | £75/*£35 | M02P03H     |
| <b>Maesteg</b> – Maesteg Campus, Bridgend College, CF34 9UN  |        |                |          |             |
| Monday   |        | 6pm-8pm        | £75/*£35 | M02P04H     |
| <b>Pencoed</b> – Pencoed Campus Bridgend College, CF35 5LG   |        |                |          |             |
| Monday   |        | 7pm-9pm        | £75/*£35 | M02P05H     |
| <b>Porthcawl</b> – Y Centre, John St, CF36 3AP   |        |                |          |             |
| Monday   |        | 7pm-9pm        | £75/*£35 | M02P06H     |
| <b>Bridgend</b> – Carnegie House, Bridgend Old Library, CF31 1EF  |        |                |          |             |
| Tuesday  |        | 10am-12.30pm   | £75/*£35 | M02P07H     |
| <b>Maesteg</b> – Maesteg Campus, Bridgend College, CF34 9UN       |        |                |          |             |
| Wednesday  |        | 1pm-3pm        | £75/*£35 | M02P08H     |

 Additional 30 minutes every week.

 Welsh for the Family courses. See page 5 for details.

\*Concessionary rate see page 24/25 | Ffioedd Gostyngol gweler tudalen 24/25

Courses Commence 25th September | Enrol in the class of your choice  
Cysiau'n dechrau 25ain Medi | Dewiswch gwrs sy'n addas i chi

## Merthyr Tydfil

| Day(s)   | Day(s) | Time           | Price    | Course Code |
|--|--------|----------------|----------|-------------|
| <b>Merthyr Tydfil</b> – Civic Centre, Castle Street, CF47 8AN  |        |                |          |             |
| Tuesday  |        | 8.30am-10.30am | £75/*£35 | M02M01H     |
| <b>Bedlinog</b> – Miners Association, 30 Pleasant View, CF46 6TF   |        |                |          |             |
| Wednesday  |        | 7.30pm-9.30pm  | £75/*£35 | M02M02H     |
| <b>Merthyr Tydfil</b> – Canolfan Soar, Pontmorlais, CF47 8UB   |        |                |          |             |
| Monday   |        | 6.30pm-8.30pm  | £75/*£35 | M02M03H     |
| <b>Aberfan</b> – Trinity Child and Family Centre, CF48 4NT    |        |                |          |             |
| Monday   |        | 9.30am-12pm    | £75/*£35 | M02M04H     |
| <b>Merthyr Tydfil</b> – Canolfan Soar, Pontmorlais, CF47 8UB  |        |                |          |             |
| Wednesday  |        | 4pm-6pm        | £75/*£35 | M02M05H     |
| <b>Merthyr Tydfil</b> – Canolfan Soar, Pontmorlais, CF47 8UB  |        |                |          |             |
| Thursday   |        | 7pm-9pm        | £75/*£35 | M02M06H     |



 Welsh for the Family courses. See page 5 for details.

\*Concessionary rate see page 24/25 | Ffioedd Gostyngol gweler tudalen 24/25

To book a place call / i gadw lle ffoniwch **01443 483 600**  
or book online / neu ewch ar-lein **learnwelsh.cymru**

## Extra Learning

### Saturday Course

University of South Wales, Treforest | £10

An opportunity to revise and to learn something new. Information about what will be covered on the course will be available beforehand online, and from your tutor. You will need to register by the Tuesday before the course.

November course: 11/11/2017

March course: TBC

June course: 02/06/18

### Pronunciation Course

Bridgend College | £10

A 10 hour course over five sessions tailored to help you with your Welsh pronunciation.

Session 1: 02/11/17

Session 4: 15/03/18

Session 2: 07/12/17

Session 5: 26/04/18

Session 3: 15/02/18

### New Year's Course

University of South Wales, Treforest | £25

An opportunity to revise and to learn something new.  
4-5/01/2018

### Exam Revision Course

Gartholwg Centre, Church Village | £20

A special revision course available to students sitting WJEC exams.

18-19/05/2018

### Summer School

University of South Wales, Treforest | £40

An opportunity to revise and practise what you have already learned.

18-22/06/18

## Dysgu Ychwanegol

### Cwrs Sadwrn

Prifysgol De Cymru, Treforest | £10

Cyfle i adolygu ac i ddysgu rhywbeth newydd. Bydd gwybodaeth am y gwaith a fydd yn cael ei gyflwyno ar y cwrs ar gael o flaen llaw ar y we, a gan eich tiwtor. Bydd angen i chi ymrestru erbyn y dydd Mawrth cyn y cwrs.

Cwrs Tachwedd: 11/11/2017

Cwrs Mawrth: I'w gadarnhau

Cwrs Mehefin: 02/06/18

### Cwrs Ynganu

Coleg Pen-y-bont | £10

Cwrs 10 awr dros bum sesiwn wedi ei deilwra i helpu'ch ynganu.

Sesiwn 1: 02/11/17

Sesiwn 4: 15/03/18

Sesiwn 2: 07/12/17

Sesiwn 5: 26/04/18

Sesiwn 3: 15/02/18

### Cwrs Calan

Prifysgol De Cymru, Treforest | £25

Cyfle i adolygu ac i ddysgu rhywbeth newydd.  
4-5/01/2018

### Cwrs Adolygu Arholiadau

Canolfan Gartholwg, Pentre'r Eglwys | £20

Cwrs adolygu arbennig ar gyfer dysgwyr sy'n sefyll arholiadau CBAC.

18-19/05/2018

### Ysgol Haf

Prifysgol De Cymru, Treforest | £40

Cyfle i adolygu ac i ymarfer yr hyn dych wedi ei ddysgu yn barod.

18-22/06/18

Courses Commence 25th September | Enrol in the class of your choice  
Cyrsgiau'n dechrau 25ain Medi | Dewiswch gwrs sy'n addas i chi



## Practice makes perfect!

### Using your Welsh outside the class

Once you join a class, it is very important that you start using your Welsh as soon as possible, which is why Glamorgan Welsh for Adults cater an extensive programme of events for our learners. These range from tutor-led revision sessions to learner-led coffee mornings.

We recommend that you aim for at least 18 practice hours outside of the classroom throughout the year. Don't worry, we are here to help!

You can find a programme of events on our website, and we regularly advertise them on our Facebook and Twitter pages.

We are always keen to expand our programme of events. If you have any ideas, get in touch.

For further details, contact our Informal Learning Officer,  
**Ifan Dylan:** ifan.dylan@decymru.ac.uk  
01443 483 600

To book a place call / i gadw lle ffoniwch **01443 483 600**  
or book online / neu ewch ar-lein **learnwelsh.cymru**

## Cyfle i Ymarfer!

### Defnyddio eich Cymraeg y tu allan i'r dosbarth

Unwaith i chi ymuno â dosbarth, mae hi'n bwysig iawn i chi ddechrau defnyddio eich Cymraeg cyn gynted â phosib, a dyna pam mae Cymraeg i Oedolion Morgannwg yn darparu rhaglen eang o weithgareddau i'n dysgwyr. Mae rhain yn ymestyn o sesiynau adolygu sy'n cael eu harwain gan diwtoriaid, i foreau coffi sy'n cael eu cynnal gan ddysgwyr.

Dyn ni'n awgrymu y dylech chi anelu i wneud o leiaf 18 awr ychwanegol mewn digwyddiadau y tu allan i'r dosbarth yn ystod y flwyddyn. Peidiwch â phoeni, byddwn ni'n eich helpu!

Gallwch weld rhaglen o'n digwyddiadau ar ein gwefan, ac mae'r wybodaeth yn cael ei hysbysu'n aml ar ein tudalennau Facebook a Twitter.

Dyn ni wastad yn awyddus i ymestyn ar y digwyddiadau yr ydyn ni'n eu cynnig. Os oes syniadau gyda chi, cysylltwch â ni.

Am fwy o fanylion, cysylltwch â'n Swyddog Dysgu Anffurfiol,  
**Ifan Dylan:** ifan.dylan@decymru.ac.uk  
01443 483 600

# Important Information

## Reserving a Place and Enrolment

You can enrol and pay in advance online at [learnwelsh.cymru](http://learnwelsh.cymru), or go along to your first lesson for a taster before enrolling.

For more information, please call us: **01443 483 600**

## Payment of Course Fees

Payment of course fees may be made by card (online only) or by cash/cheque (cheques made payable to 'University of South Wales').

The tutor/office will advise how to purchase course materials.

## Course Fees

Course fees are individually listed next to each course. These do not include course materials.

## Concessionary Fees

Concessionary fees (marked with a \*) apply if you are:

▲ Full time student

Receiving / Dependant on person receiving:

▲ Pension Credit

▲ JSA

▲ Income Support

▲ Employment Support Allowance (ESA)

▲ Incapacity Benefit

▲ Severe Disablement Benefit

▲ Working Tax Credit

▲ Child Tax Credit

▲ Housing Benefit

▲ Universal Credit

**You must provide proof of receipt of benefit(s) if you wish to claim concessionary fees.**

## Refund of course fees

Glamorgan Welsh for Adults will refund fees where:

▲ The course is cancelled

▲ The course moves location or if there is a change of day / time from that advertised in the literature

**Please note: fees are not refundable after enrolment paperwork has been completed. Fees are non-refundable for students who wish to withdraw early from the course.**

## Financial Contingency Fund

Students can apply for the Student Contingency Fund to contribute towards costs associated with the course, eg. childcare or travelling expenses (other than the course fees). For further information go to [learnwelsh.cymru](http://learnwelsh.cymru)

## Additional Information

▲ All courses need a minimum number of students to run.

▲ If you find you have enrolled on the wrong level, let us know and we'll place you in an appropriate class.

▲ We can assess your level over the phone.

▲ Shift workers: Get in touch, we might be able to help you.

For further enquiries, please don't hesitate to contact us: [learnwelsh@southwales.ac.uk](mailto:learnwelsh@southwales.ac.uk)  
**01443 483 600**

# Gwybodaeth Bwysig

## Cadw lle ar gwrs ac Ymrestru

Gallwch ymrestru a thalu o flaen llaw arlein ar [learnwelsh.cymru](http://learnwelsh.cymru), neu gallwch fynd i'ch gwrs gyntaf i gael blas ar y cwrs cyn ymrestru.

Am fwy o wybodaeth, ffoniwch ni: **01443 483 600**

## Talu Ffioedd Cwrs

Gallwch dalu ffioedd cwrs gyda cherdyn (arlein yn unig), arian parod neu siec (sieciau yn daladwy i 'Prifysgol De Cymru').

Bydd y tiwtor/swyddfa yn rhoi cyngor ar sut i brynu'r deunyddiau dysgu.

## Ffioedd

Nodir ffi pob cwrs ar y tudalennau sy'n rhestru'r cyrsiau. Dyw rhain ddim yn cynnwys deunyddiau'r cwrs.

## Ffioedd Gostyngol

Gall myfyrwyr dalu'r ffi ostyngol (wedi nodi â \*) os ydynt yn:

▲ Myfyriwr llawn amser

Derbyn / Dibynnu ar berson sy'n derbyn

▲ Credyd Pensiwn

▲ Lwfans Ceisio Gwaith (JSA)

▲ Cymhorthdal Incwm

▲ Lwfans Cyflogaeth a Chymorth (LCCh)

▲ Budd-dal anallu

▲ Budd-dal anallu difrifol

▲ Credyd Treth Gwaith

▲ Credyd Treth Plant

▲ Budd-dal Tai

▲ Credyd Cynhwysol

**Rhaid i chi ddarparu tystiolaeth eich bod yn derbyn budd-daliadau os dymunwch hawlio gostyngiad.**

## Ad-dalu Ffioedd Cwrs

Bydd Cymraeg i Oedolion Morgannwg yn ad-dalu ffioedd os:

▲ Caiff y cwrs ei ganslo

▲ Yw'r cwrs yn symud lleoliad, neu os oes newid i'r hyn a hysbysebir yn llenyddiaeth Cymraeg i Oedolion Morgannwg

**Nid yw'n bosib ad-dalu ffioedd ar ôl i fyfyrwyr gwblhau'r ffurflen ymrestru. Ni fydd modd ad-dalu ffioedd os yw myfyrwyr yn dymuno gadael y cwrs yn gynnar.**

## Cronfa Ariannol wrth gefn

Gall myfyrwyr gynnig am y Gronfa Ariannol Wrth Gefn i gyfrannu at gostau sy'n gysylltiedig â'r cwrs (heblaw am y ffi). Am fwy o wybodaeth ewch i [learnwelsh.cymru](http://learnwelsh.cymru)

## Gwybodaeth ychwanegol

▲ Mae'n rhaid cael nifer penodol o ddysgwyr er mwyn cynnal dosbarth.

▲ Os ydych chi wedi ymrestru ar y lefel anghywir, rhowch wybod i ni a byddwn ni'n cael hyd i gwrs ar y lefel iawn i chi.

▲ Gallwn ni asesu eich lefel chi dros y ffôn.

▲ Gweithwyr shift: Cysylltwch â ni, efallai y byddwn ni'n gallu eich helpu.

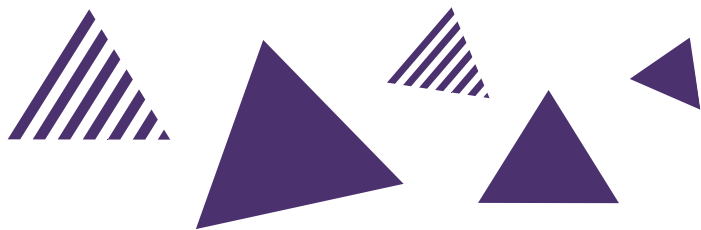
Os oes ymholiadau pellach gyda chi, cysylltwch â ni: [dysgucymraeg@decymru.ac.uk](mailto:dysgucymraeg@decymru.ac.uk)  
**01443 483 600**

## Online resources Adnoddau Ar-lein



Videos to help explain the grammar you come across in your course. Great for revision and catch-up. Check out [youtube.com/WelshWithUs](https://www.youtube.com/WelshWithUs).

Fideos sy'n esbonio'r gramadeg yn eich cwrs. Gwych ar gyfer adolygu ac i ddal i fyny. Ewch i [youtube.com/WelshWithUs](https://www.youtube.com/WelshWithUs).

The logo for 'Welsh Plus+' features the text 'Welsh Plus+' in white on a blue background, with a striped triangle to the left.

# Welsh Plus<sup>+</sup>

Learn Welsh Online With Us

For pronunciation, grammar tips and useful vocab, take a look at [youtube.com/WelshPlus](https://www.youtube.com/WelshPlus).

The YouTube logo is displayed in white on a blue background.

Am fideos gramadeg a geirfa ddefnyddiol, ewch i [youtube.com/WelshPlus](https://www.youtube.com/WelshPlus).

A collection of several triangles in various shades of purple and blue, some with diagonal stripes, scattered across the page.

## Gwybodaeth Ddefnyddiol Useful Information

### Siopau Llyfrau Cymraeg Lleol Local Welsh Book Shops

Maen nhw'n gwerthu llawer o lyfrau i ddysgwyr. They all have a good choice of books for learners.

#### Siop Y Bont

Pontypridd, The Indoor Market, Pontypridd, CF37 2SP  
01443 402584 · [www.siopybont.co.uk/](http://www.siopybont.co.uk/)

#### Siop Yr Hen Bont

Pen-y-bont ar Ogwr | Bridgend  
2 Old Bridge, Pen-y-bont ar Ogwr CF31 1JH  
01656 669397



## Glamorgan Welsh for Adults

University of South Wales, Pontypridd, CF37 1DL.



@learncymraegMG



/WelshForAdultsGlamorgan