

Croeso i'r Cwrs

Llawlyfr y Dysgwyr Learners' Handbook 2022-23



Dysgu
Learn

2022/23



dysgucymraeg.cymru
learnwelsh.cymru

Ceredigion, Powys a Sir Gâr
Ceredigion, Powys & Carmarthenshire



1872 PRIFYSGOL
ABERYSTWYTH
UNIVERSITY

Croeso i Dysgu Cymraeg Ceredigion, Powys a Sir Gâr

Dyma'r tîm fydd yma i'ch helpu yn ystod y cwrs:

Siôn Meredith	Pennaeth	stm@aber.ac.uk
Meryl Evans	Cydlynnydd Ceredigion	mee25@aber.ac.uk
Sue Evans	Cydlynnydd Gogledd Powys, a Chymraeg yn y gweithle	sae20@aber.ac.uk
Olwen Morus	Cydlynnydd Cymraeg Gwaith a Chymraeg yn y Cartref	olm25@aber.ac.uk
Anika Lloyd	Cydlynnydd De Powys a Sir Gâr	ail@aber.ac.uk
Debbie Gilbert	Cydlynnydd Gogledd Powys	dlg3@aber.ac.uk
Felicity Roberts	Cydlynnydd Cwrs Haf Dwys	afr@aber.ac.uk
Rhian Lloyd	Tîm Dysgu Cymraeg	cirstaff@aber.ac.uk
Lowri M. Jones	Tîm Dysgu Cymraeg	cirstaff@aber.ac.uk
Steffan Price	Tîm Dysgu Cymraeg	cirstaff@aber.ac.uk
Carys Hughes Jones	Cydlynnydd Gweinyddol	caj@aber.ac.uk
Cêt Morgan	Swyddog Rhaglen	ccm@aber.ac.uk
Elin Williams	Cydlynnydd Hyfforddiant An- sawdd a Chwricwlwm	eiw@aber.ac.uk

Welcome to Learn Welsh Ceredigion, Powys and Sir Gâr

This is the team! We are here to help during your course:

Siôn Meredith	Head of Learn Welsh	stm@aber.ac.uk
Meryl Evans	Co-ordinator—Ceredigion	mee25@aber.ac.uk
Sue Evans	Co-ordinator—north Powys and Welsh in the Workplace	sae20@aber.ac.uk
Olwen Morus	Co-ordinator— Work Welsh and Welsh at Home	olm25@aber.ac.uk
Anika Lloyd	Co-ordinator—south Powys	ail@aber.ac.uk
Debbie Gilbert	Co-ordinator—north Powys	dlg3@aber.ac.uk
Felicity Roberts	Co-ordinator—Intensive Summer Course	afr@aber.ac.uk
Rhian Lloyd	Learn Welsh Team	cirstaff@aber.ac.uk
Lowri M. Jones	Learn Welsh Team	cirstaff@aber.ac.uk
Steffan Price	Learn Welsh Team	cirstaff@aber.ac.uk
Carys Hughes Jones	Administration Co-ordinator	caj@aber.ac.uk
Cêt Morgan	Programme co-ordinator	ccm@aber.ac.uk
Elin Williams	Training Quality and Curriculum Co-ordinator	eiw@aber.ac.uk

Gwybodaeth Bwysig

Diolch am gofrestru ar gwrs gyda Dysgu Cymraeg Ceredigion Powys a Sir Gâr. ‘Dyn ni wir yn gobeithio y byddwch yn mwynhau’r cwrs. Os dych chi’n meddwl eich bod ar gwrs ar y lefel anghywir, peidiwch â phoeni. Byddwn ni yn eich helpu i newid i’r lefel gywir – dyma rif ffôn a chyfeiriad ebost y swyddfa:

0800 876 6975 | dysgucymraeg@aber.ac.uk | learnwelsh@aber.ac.uk

Dyddiadau’r Tymor

Tymor yn dechrau	19-23 Medi 2022
Hanner Tymor Hydref	31 Hydref—4 Tachwedd 2022
Gwyliau’r Nadolig	19 Rhagfyr 2022 - 6 Ionawr 2023
Hanner Tymor Chwefror	20-24 Chwefror 2023
Gwyliau’r Pasg	3—14 Ebrill 2023
Hanner Tymor y Gwanwyn	29 Mai - 2 Mehefin 2023
Tymor yn gorffen	5-9 Mehefin 2023
Dysgu yn lle Gŵyl y Banc Calan Mai	12 Mehefin 2023

‘Fy Nysgu’ - Proffil y Dysgwr ar y Safle Cenedlaethol

Byddwch yn medru gweld manylion allweddol am eich cwrs yn yr adran ‘Fy Nysgu’. Yma bydd dyddiad ac amser eich dosbarth gyda dolen Zoom neu Teams er mwyn i chi ymuno â’r dosbarth. Bydd unrhyw ddeunydd hunan-astudio yn cael ei gynnwys yma hefyd.

Important Information

Thank you for registering on a course with Learn Welsh Ceredigion Powys and Carmarthenshire. We really hope that you will enjoy the course. If you think that you are not on the right level, don't worry. We will help you to change to another level – this is our telephone number and email address:

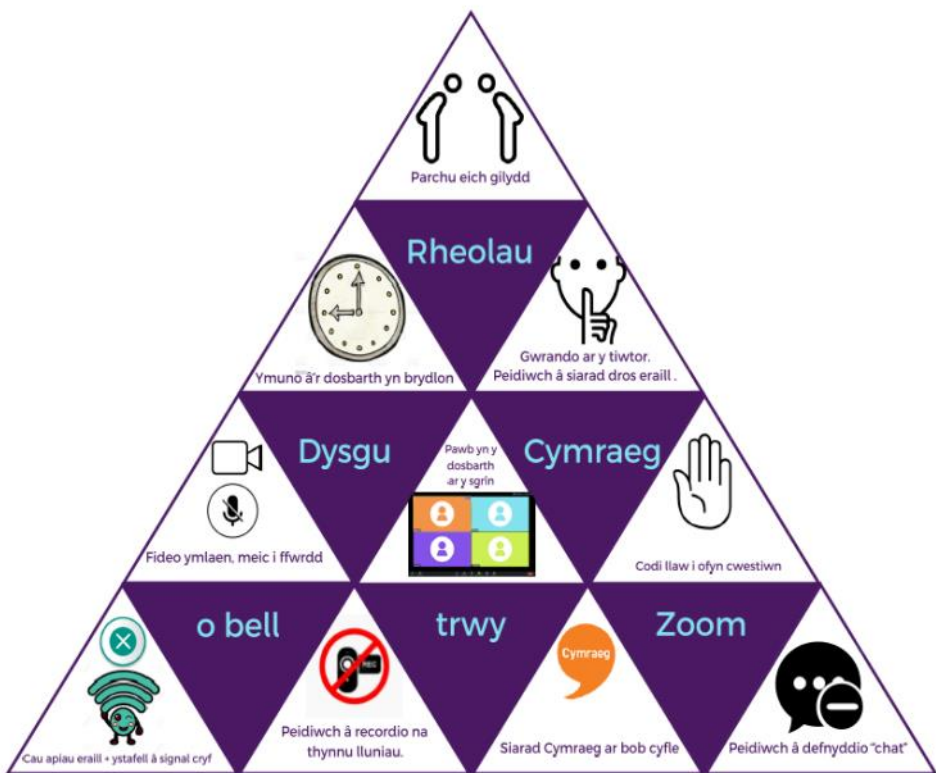
0800 876 6975 | dysgucymraeg@aber.ac.uk | learnwelsh@aber.ac.uk

Term dates

Start of Term	19-23 September 2022
Autumn Half Term	31 October—4 November 2022
Christmas Holidays	19 December 2022 - 6 January 2023
February Half Term	20-24 February 2023
Easter Holidays	3– 14 April 2023
Spring Half Term	29 May - 2 June 2023
End of term	5– 9 June 2023
Teaching instead of May Day Bank Holiday	12 June 2023

'My Learning' - Learner Profile on the National Website

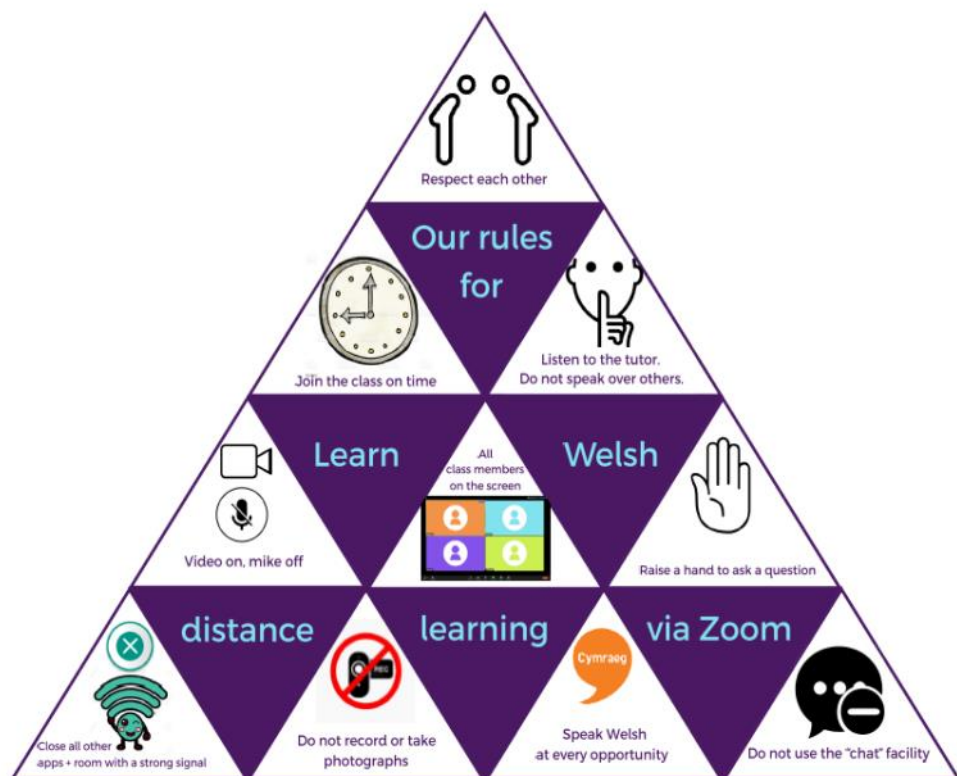
Here, in 'My Learning' you will find important details about your course. The date and time of your class can be seen here, along with the Zoom or Teams link so that you can join the class. Here, you will also have access to any self-study material.



dysgucymraeg.cymru
learnwelsh.cymru
Ceredigion, Powys a Sir Gâr
Ceredigion, Powys & Carmarthenshire



1872 PRIFYSGOL
ABERYSTWYTH
UNIVERSITY



dysgucymraeg.cymru
learnwelsh.cymru
—
Ceredigion, Powys a Sir Gâr
Ceredigion, Powys & Carmarthenshire



1872 PRIFYSGOL
ABERYSTWYTH
UNIVERSITY

Cod Ymddygiad yn y Dosbarth Cymraeg

'Dyn ni'n disgwyl i chi ymddwyn yn gyfrifol ac yn barchus tuag at eraill. Mae cyddoldeb yn bwysig iawn i ni o ran oed, anabledd, rhyw, cyfeiriadaeth rywiol, newid rhyw, hil, crefydd a chred (yn cynnwys pobl heb gred), priodas a phartneriaeth sifil, beichiogrwydd a mamolaeth.

Fyddwn ni ddim yn derbyn unrhyw sylwadau amhriodol yn y dosbarth.

Mae gofyn i bawb ddilyn [cod urddas a pharch Prifysgol Aberystwyth](#).

Mae rhagor o wybodaeth yma am [gydraddoldeb ac amrywioldeb yn y Brifysgol](#).

Rhagenwau

Dim pawb sy'n teimlo'n gyfforddus â'r rhagenwau hi / fo traddodiadol ac efallai y bydd yn well ganddyn nhw ddefnyddio rhagenwau eraill megis nhw neu ze. Mae defnyddio'r rhagenwau sydd yn dangos hunaniaeth rhywun yn dangos parch, a gallai defnyddio rhagenwau eraill fod yn amharchus. Mater i chi yw rhannu eich rhagenwau personol yn gyhoeddus, ond bellach, mae modd gwneud hynny ar sgrin Zoom.



Code of Conduct in the Welsh Class

We expect you to behave responsibly and respect others. We are committed to advancing equality on the grounds of age, disability, sex and sexual orientation, gender reassignment, race, religion and belief (including lack of belief), marriage and civil partnership, pregnancy and maternity.

Inappropriate remarks of any sort will not be tolerated.

Everyone is required to follow [Aberystwyth University's Dignity and respect code](#).

There is further Information here about [equality and diversity at the University](#).

Pronouns

Not everyone feels comfortable with the traditional she / he pronouns and may wish to use other pronouns such as they or ze. Use of the pronoun that a person states best reflects their identity is considered respectful, and the use of other pronouns could be disrespectful. It is up to you whether you wish to share your personal pronouns publicly but it is now possible to do so on your Zoom screen.



Llyfrau Cwrs

Mynediad	Cwrslyfr Cenedlaethol	Ar werth yn eich siop lyfrau leol neu ar http://www.gwales.com	£10
Sylfaen	Cwrslyfr Cenedlaethol	Ar werth yn eich siop lyfrau leol neu ar http://www.gwales.com	£10
Canolradd	Cwrslyfr Cenedlaethol	Ar werth yn eich siop lyfrau leol neu ar http://www.gwales.com	£10
Uwch 1	Cwrslyfr Cenedlaethol	Ar werth yn eich siop lyfrau leol neu ar http://www.gwales.com os ydych yn ymuno yn ystod ail flwyddyn y cwrs Uwch 1 bydd y swyddfa yn rhoi gwybod i chi	£10
Uwch 2	Cwrslyfr Cenedlaethol	Ar werth yn eich siop lyfrau leol neu ar http://www.gwales.com	£10
Uwch 3	Cwrslyfr Cenedlaethol	Ar werth yn eich siop lyfrau leol neu ar http://www.gwales.com	£10
Gloywi	Deunydd amrywiol	Bydd y tiwtor yn rhoi gwybodaeth i chi.	

Llyfrau darllen

Mae yna gyfres o lyfrau darllen diddorol i ddysgwyr ar lefelau Mynediad i Uwch - Cyfres Amdani. Mae'r llyfrau hyn wedi eu graddoli'n ofalus i gyd-fynd â'r gwaith cwrs ar bob lefel, er mwyn i chi gael mwynhau darllen. Ewch i <http://www.gwales.com> neu i'ch siop lyfrau lleol i'w prynu!

Dysgu ychwanegol

'Dyn ni'n eich annog chi i ddysgu y tu allan i'r dosbarth hefyd. Ceisiwch wneud cymaint o oriau ychwanegol â phosib drwy ddefnyddio'r wefan Dysgu Cymraeg <https://dysgucymraeg.cymru/>, a mynychu'r cyrsiau atodol—manyllion ar dudalen 14. Hefyd cofiwch am y Gwaith Cartref!

Ymarfer ychwanegol

'Dyn ni'n trefnu gweithgareddau a digwyddiadau i ddysgwyr i ymarfer y tu allan i'r dosbarth mewn awyrgylch hollol anffurfiol. Byddwch yn cael gwybodaeth gan eich tiwtor yn ystod y cwrs.

Bydd dysgwyr ar lefel Ganolradd ac Uwch hefyd yn cael cyfle i baru gyda siaradwr Cymraeg rhugl fel rhan o'r Cynllun Siarad: <https://dysgucymraeg.cymru/dysgu/siarad/>

Byddwch yn derbyn e-fwletin yn rheolaidd gyda rhagor o wybodaeth am wahanol weithgareddau yn eich ardal. Cofiwch hefyd ein dilyn ar Facebook a Trydar

<https://www.facebook.com/cioCeredigionPowys> neu www.facebook.com/ciosirgar/
<https://twitter.com/learnwelshcp>

Course books

Mynediad	National Course book	For sale in your local book shop or online at http://www.gwales.com	£10
Sylfaen	National Course book	For sale in your local book shop or online at http://www.gwales.com	£10
Canolradd	National Course book	.For sale in your local book shop or online at http://www.gwales.com	£10
Uwch 1	National Course book	For sale in your local book shop or online at http://www.gwales.com If you're joining during the second year of the Uwch 1 course you will receive information from the office	£10
Uwch 2	National Course book	For sale in your local book shop or online at http://www.gwales.com .	£10
Uwch 3	National Course book	.For sale in your local book shop or online at http://www.gwales.com	10
Gloywi	Various material	You will receive information about the course book from your tutor.	

Reading books

There is a series of interesting readers for learners at Entry to Advanced levels - The Amdani series. These books have been carefully graded to the patterns and vocabulary in the courses at each level, so that you have a really enjoyable read. You will find them at <http://www.gwales.com> or in your local book shop

Additional learning

We're committed to giving you the best opportunities to improve and advance your learning. Try to complete as many additional hours as possible, using the Learn Welsh website <https://learnwelsh.cymru/> and participating in the extra courses that we provide—details on page 15. Don't forget the homework!

Extra Practice

We organise a wide range of events for learners to use Welsh outside the classroom in an informal atmosphere. You will receive details from your tutor during the year.

Learners at Intermediate and Advanced levels will also have an opportunity to be paired with a fluent Welsh speaker as part of the Cynllun Siarad: <https://learnwelsh.cymru/learning/siarad/>

You will receive a regular online bulletin with all the details regarding practice activities in your area. Don't forget to follow us on Facebook and Twitter:

<https://www.facebook.com/cioCeredigionPowys> or www.facebook.com/ciosirgar/

<https://twitter.com/learnwelshcp>

Gwefannau Defnyddiol

Y Ganolfan Dysgu Cymraeg Cenedlaethol	https://dysgucymraeg.cymru/
BBC Cymru Fyw—newyddion	Newyddion a mwy - BBC Cymru Fyw
Geiriaduron ar-lein	https://geiriaduracademi.org/ https://www.bangor.ac.uk/canolfanbedwyr/ap_geiriaduron.php.cy http://www.geiriadur.ac.uk/ www.gweiadur.com
Golwg 360—newyddion	Golwg360 – Newyddion, materion cyfoes, chwaraeon a chelfyddau – y diweddara yn ddi-dor yn y Gymraeg.
Dysgu Geirfa	https://app.memrise.com/courses/english/welsh/
Welsh plus / Welsh with us	www.youtube.com
Tudalen Facebook	https://www.facebook.com/cioCeredigionPowys www.facebook.com/ciosirgar/
Meddalwedd Cymraeg	http://www.meddal.com
Quizlet – cardiau fflach	https://quizlet.com
Say Something in Welsh	https://www.saysomethingin.com/welsh
Duolingo	https://www.duolingo.com/
Pigion Radio Cymru	https://www.bbc.co.uk/radiocymru/safle/pigion/
S4C	http://www.s4c.cymru/cy/dysgu-cymraeg/

Useful websites

The National Centre for Learning Welsh	https://learnwelsh.cymru/
BBC Cymru Fyw—news	Newyddion a mwy - BBC Cymru Fyw
Online dictionaries	https://geiriaduracademi.org/ https://www.bangor.ac.uk/canolfanbedwyr/ap_geiriaduron.php.en www.welsh-dictionary.ac.uk/online-welsh-dictionaries www.gweiadur.com
Golwg 360—news	Golwg360 – Newyddion, materion cyfoes, chwaraeon a chelfyddau – y diweddara yn ddi-dor yn y Gymraeg.
Vocabulary	https://app.memrise.com/courses/english/welsh/
Welsh plus / Welsh with us	www.youtube.com
Facebook page	https://www.facebook.com/cioCeredigionPowys www.facebook.com/ciosirgar/
Welsh software	http://www.meddal.com
Quizlet – flash cards	https://quizlet.com
Say Something in Welsh	https://www.saysomethingin.com/welsh
Duolingo	https://www.duolingo.com/
Radio Cymru – selection of clips	https://www.bbc.co.uk/radiocymru/safle/pigion/
S4C	http://www.s4c.cymru/en/dysgu-cymraeg/

Cyrsiau Ychwanegol	Disgrifiad	Manylion
Cicio'r Cof	Cwrs undydd i adolygu cyn dechrau tymor	17 Medi 2022 £10 Ar-lein (Zoom)
Sadwrn Siarad	Cwrs undydd i adolygu yn ystod y tymor	12 Tachwedd 2022 £10 Ar-lein (Zoom)
Cwrs Chwefror	Cwrs deuddydd yn Chwefror	20 + 21 Chwefror 2023 £15 Ar-lein (Zoom)
Cwrs Pasg	Cwrs deuddydd yn ystod gwyliau'r Pasg	3 + 4 Ebrill 2023 £15 Ar-lein (Zoom)
Cwrs Adolygu Arholiad	Cwrs undydd yn adolygu at yr arholiad i gynnwys ffug arholiad	Gwybodaeth i ddilyn
Cwrs Haf	Cwrs tridiau ar ddechrau gwyliau'r haf	Gogledd Powys 3, 4, 5 Gorffennaf 2023 De Powys 26, 27, 28 Mehefin 2023 Ceredigion 28, 29, 30 Mehefin 2023 Sir Gar 3, 4, 5 Gorffennaf 2023 Wyneb yn Wyneb
Cwrs Haf Dwys	Cwrs preswyl/ di-breswyl dwys pedair wythnos ym mis Awst	Gwybodaeth i ddilyn

Additional Courses	Description	Details
Rust Buster	Revision before the start of term	187September 2022 £10 Online (Zoom)
Sadwrn Siarad	A day school for practise and revision	12 November 2022 £10 Online (Zoom)
February Course	Two day course in February	20 + 21 February 2023 £15 Online (Zoom)
Easter Course	A two day course during the Easter break	3 + 4 April 2023 £15 Online (Zoom)
Exam Revision Course	A one day revision course including a mock exam	Information to follow
Summer Course	A three day course at the start of the summer break	North Powys 3, 4, 5 Gorffennaf 2023 South Powys 26, 27, 28 Mehefin 2023 Ceredigion 28, 29, 30 Mehefin 2023 Sir Gar 3, 4, 5 Gorffennaf 2023 Face to face
Intensive Summer Course	A four week intensive course during August	Information to follow

Presenoldeb

Er mwyn cael y gorau o'r cwrs, ymunwch â phob gwers, a dewch yn brydlon. Os byddwch yn absennol rhwch wybod i'ch tiwtor. Mae cyfeiriad ebost Prifysgol Aberystwyth gan eich tiwtor felly gofynnwch amdano. Os byddwch yn colli sawl gwers, bydd cyfle i chi drafod â'ch tiwtor y ffordd orau i geisio dal fyny. 'Dyn ni yma i helpu!

Arholiadau

Mae CBAC yn darparu pedwar cymhwyster penodol i oedolion sy'n Dysgu Cymraeg. Gallwch chi ennill y cymwysterau hyn drwy sefyll cyfres o brofion llafar, gwrando, darllen ac ysgrifennu ar ddiwrnodau penodol. Cewch wybodaeth bellach gan eich tiwtor. Does dim ffi am yr arholiadau hyn, a byddwch yn gallu cofrestru drwy fynd i:

<https://www.wjec.co.uk/qualifications/welsh-for-adults/>

Talu

Os nad ydych chi'n gallu talu'r ffi lawn (£90) cyn dechrau'r cwrs, gofynnwch i'r Tîm Dysgu Cymraeg am delerau arbennig.

Ffioedd Gostyngol Mae gostyniad o 40% ar gael ar gyfer:

- **Pensiynwyr sy'n derbyn credyd pensiwn**
- **Myfyrwyr llawn amser**
- **Unigolion sy'n hawlio rhai budd-daliadau** (e.e. Budd-dal Tai, Cymhorthdal Incwm, Budd-dal Treth Plant, Budd-dal Analluogrwydd (yn seiliedig ar incwm), Lwfans Cyflogaeth a Chymorth (yn seiliedig ar incwm), Lwfans Ceisio am Waith (yn seiliedig ar incwm), Gofalwyr). **I hawlio'r ffi ostyngol rhaid i chi gysylltu â ni (bydd rhaid i chi ddarparu tystiolaeth).**

Gostyngiad aml-gwrs Os ydych chi'n dymuno mynychu mwy nag un cwrs wythnosol, 'dyn ni'n cynig disgownt o 50% oddi ar yr ail a'r trydydd cwrs a.y.y.b. I hawlio'r gostyngiad hwn cysylltwch â'n Tîm Dysgu Cymraeg.

Polisi Ad-dalu Os byddwn ni'n canslo dosbarth, ad-delir y ffi lawn. Os na fyddwch chi yn mynychu'r wers gyntaf, byddwn ni'n adalu 80% o'r ffi. Os byddwch yn rhoi'r gorau i ddysgu yn ystod y 4 wythnos gyntaf, byddwn ni'n ad-dalu 50% o'r ffi. Os byddwch yn penderfynu peidio â pharhau wedi'r 4 wythnos gyntaf, fyddwn ni ddim yn cynnig ad-daliad.

Attendance

In order to get the best out of your course, please try to join every lesson, and be punctual. If you cannot attend, please inform the tutor. Your tutor will have an Aberystwyth University email address, so please ask them for it. If you miss a few classes, your tutor will help you catch up – we are eager to help you with the learning process.

Examinations

If you wish to gain a formal qualification, four examinations are offered by WJEC. These exams entail oral, listening, reading and writing tests on specific dates. You will receive more information from your tutor. The exams are free of charge, and you will be able to register by going to:

<https://www.wjec.co.uk/qualifications/welsh-for-adults/>

Payment

If you are unable to pay the full annual fee (£90) before starting the course, you can ask our Learn Welsh Team for special terms.

Concessory Fees A 40% discount is available to:

- Pensioners who claim pension credit
- Full time students
- Those on benefits (e.g. Housing

Benefit, Universal Credit, Income Support, Child Tax Credit, Disability Benefit (based on income), Employment Support Allowance (based on income), Job Seekers Allowance (based on income), Carers. **To claim these concessory rates please contact us (evidence of eligibility must be provided).**

Multi course discount Should you wish to attend more than one weekly course, you can claim a 50% discount on the second and third courses etc. To claim this discount please contact our Learn Welsh Team.

Refund Policy Should we cancel a class, a full refund will be given. If you do not attend the first class, 80% of the fee will be refunded. If you stop attending a class during the first 4 weeks, 50% of the course fee will be refunded. If you decide to pull out of the course after the first 4 weeks, no refund will be given.

Dysgwyr ag Anghenion Penodol

'Dyn ni'n cymryd pob cam ymarferol posib i sicrhau fod dysgwyr ag anghenion penodol yn gallu cymryd rhan lawn ym mhob agwedd o gwrs dysgu Cymraeg. Os dych wedi nodi unrhyw anghenion ychwanegol wrth gofrestru, bydd y cydlynnydd lleol yn cysylltu â chi i drafod ymhellach.

Mae rhagor o wybodaeth [yma](#) am gymorth dysgu ac anabledd y Brifysgol:

Canmol a Chwyno

Bydd pob dysgwr yn cael cyfle i fynegi barn drwy'r holiadur cenedlaethol a thrwy'r broses arsylwi. 'Dyn ni eisiau sicrhau profiad addysgol o ansawdd uchel i'n holl ddysgwyr.

'Dyn ni'n croesawu **canmoliaeth** o'r cyrsiau. Bydd derbyn canmoliaeth haeddiannol yn rhoi hwb mawr i'ch tiwtor, felly os oes gyda chi reswm i ganmol, dywedwch wrth y tiwtor, neu anfonwch air at eich Cydlynnydd Ardal neu'r Pennaeth.

Fodd bynnag, efallai y bydd achlysuron pan fyddwch yn anfodlon ar y gwasanaethau neu'r cyfleusterau dysgu ac addysgu.

'Dyn ni'n eich annog i drafod unrhyw faterion yn ymwneud â'r cwrs â'ch tiwtor yn y lle cyntaf. Os nad oes modd ymdrin â'r mater gyda'r tiwtor, cysylltwch os gwelwch yn dda â'ch Cydlynnydd Ardal. Mae eu manylion cyswllt ar ddechrau'r llawlyfr.

Gallwch chi weld manylion llawn trefn gwyno Prifysgol Aberystwyth ar y ddolen hon:

<https://www.aber.ac.uk/cy/aqro/handbook/complaints/>

Cronfa Ariannol

Mae gymorth ariannol ar gael er mwyn eich cefnogi i ddysgu Cymraeg:

- Adnoddau / cyfarpar / deunyddiau dysgu, gan gynnwys dyfeisiadau digidol a mynediad i'r we
- Costau teithio a pharcio
- Ffi arholiad
- Gofal plant
- Anabledau

I weld pwy sy'n gymwys a sut i wneud cais, cliciwch [Cronfa Ariannol | Dysgu Cymraeg](#)

Learners with Specific Needs

We take all possible practical steps to enable full participation by learners with specific needs in all aspects of their course. If you have noted any additional needs when registering, your local co-ordinator will contact you to discuss what steps to take to help you.

[Here](#) you will find more information on learner support and disability:

Praise and Complaints

Every learner will be invited to complete a national survey in order to evaluate the learning experience. Also there will be an opportunity to provide feedback during classroom observations. We aim to provide the best possible learning experience.

We welcome any **praise** of our provision – this will inevitably be welcomed by the tutor. If you do have reason to praise, tell the tutor, area co-ordinator or the Head of Learn Welsh.

However, sometimes, there will be occasions when you will have a concern about aspects of your course.

We encourage you to discuss if possible, in the first instance with your tutor. If this is not possible, you may contact one of the area co-ordinators whose contact details are listed at the front of the handbook..

The full details of the complaints procedure for Aberystwyth University are to be found here:

<https://www.aber.ac.uk/en/academic-registry/handbook/complaints/>

Financial Support

You may be eligible for financial support to help you to learn Welsh:

- Resources / equipment / learning materials, including digital devices and internet access
- Travel and parking costs
- Exam fee
- Childcare
- Disabilities

Further details about who is eligible, and how to apply here: [Financial Support | Learn Welsh](#)

Iechyd, Diogelwch a Lles

'Dyn ni'n ceisio ein gorau i ofalu am eich iechyd, diogelwch a lles, yn y dosbarth neu wrth ddysgu o bell. Os nad dych chi'n teimlo'n ddiogel, neu os oes gyda chi unrhyw bryderon, siaradwch â'r tiwtor yn y lle cyntaf os gwelwch yn dda.

Mae manylion [yma](#) am y gwasanaethau lles sy'n cael eu cynnig gan Brifysgol Aberystwyth.

Mae cyngor a gwybodaeth ynglŷn â Covid-19 ar gael [yma](#).

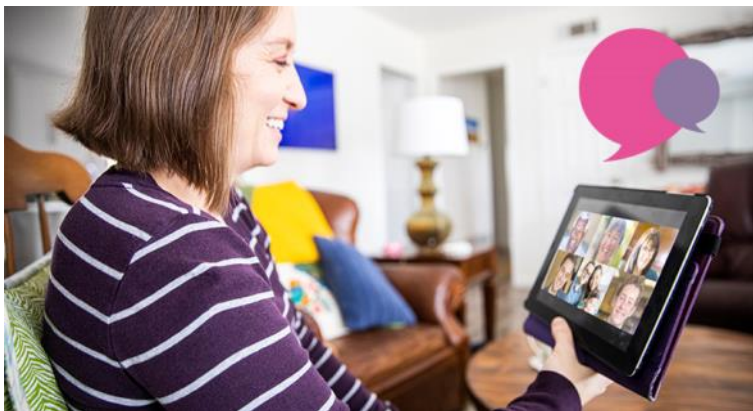
Mae manylion [yma](#) am bolisi iechyd a diogelwch y Brifysgol, a manylion [yma](#) am gamau gweithredu brys.

Trefniadau Diogelu Pobl sy'n Agored i Niwed

Mae gyda ni ddyletswydd tuag at bobl sy'n agored i niwed sydd yn cymryd rhan yng ngweithgareddau'r Brifysgol. Mae hyn yn cynnwys pobl sy'n agored i niwed sy'n aelodau o staff a dysgwyr.

Mae canllawiau arfer da a sut i adrodd am bryder neu ddigwyddiad ar gael [yma](#).

Mae copi llawn [yma](#) o bolisi a phrotocolau diogelu Prifysgol Aberystwyth.



Health, Safety and Wellbeing

We have your health, safety and wellbeing at heart, in the classroom and also if you are learning online. If you don't feel safe, or if you have any issues, please speak to your tutor in the first instance.

Information is available [here](#) about Aberystwyth University's Wellbeing Service.

Information and advice about Covid-19 is available [here](#).

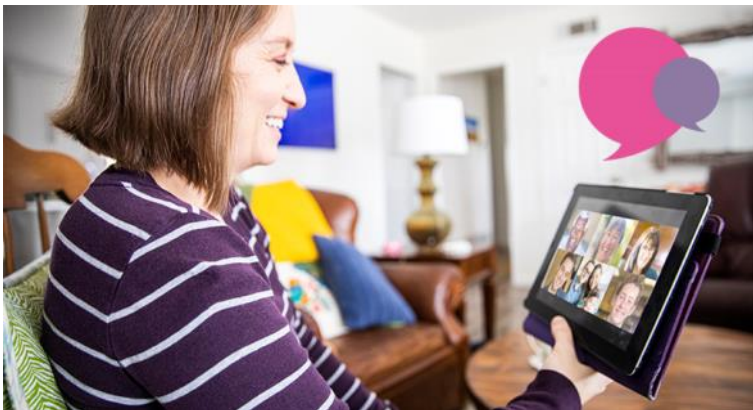
There are details [here](#) about the University's health and safety policy, and details [here](#) about emergency actions.

Safeguarding

Aberystwyth University recognises that it has a duty towards vulnerable persons who are engaging in University activities. This includes vulnerable persons who are members of staff, and students.

Click [here](#) for good practice guidance and how to report any concern or incident.

A full copy of the University's safeguarding policy and protocols is available [here](#).





Learn Welsh - Ceredigion Powys



@learnwelshcp

0800 876 6975

dysgucymraeg.cymru

learnwelsh.cymru